

Grosvenor Terrace, Camberwell, SE5

6 bedroom house - terraced to let

£1,200 Per Week

Furnished

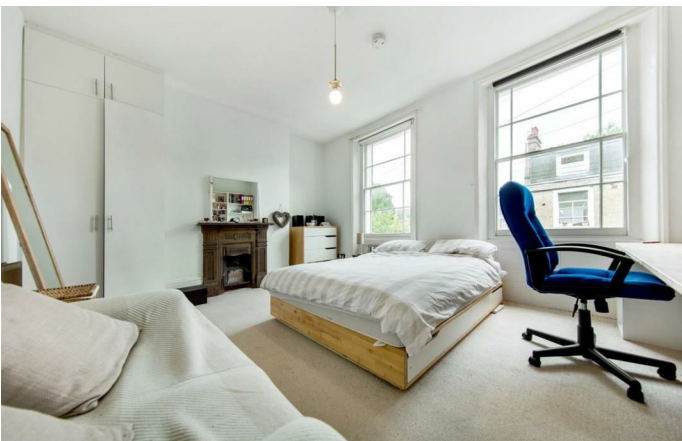
Property Details

(This property holds an HMO license) A stunning six double bedroom, two bathroom townhouse split over four levels. Upon walking into the property you are greeted with two of the six double beds and a modern shower room. On the lower ground you will find an open plan kitchen reception area which has ample room to dine and relax. The modern kitchen seamlessly flows through into a private garden. On the top two levels, you will find the remaining double bedrooms and a family size bathroom. The property is a short walk from Oval and Kennington tube stations (Northern Line), and Vauxhall train station and underground station all within close proximity. There are local buses offer excellent transport links to The City.

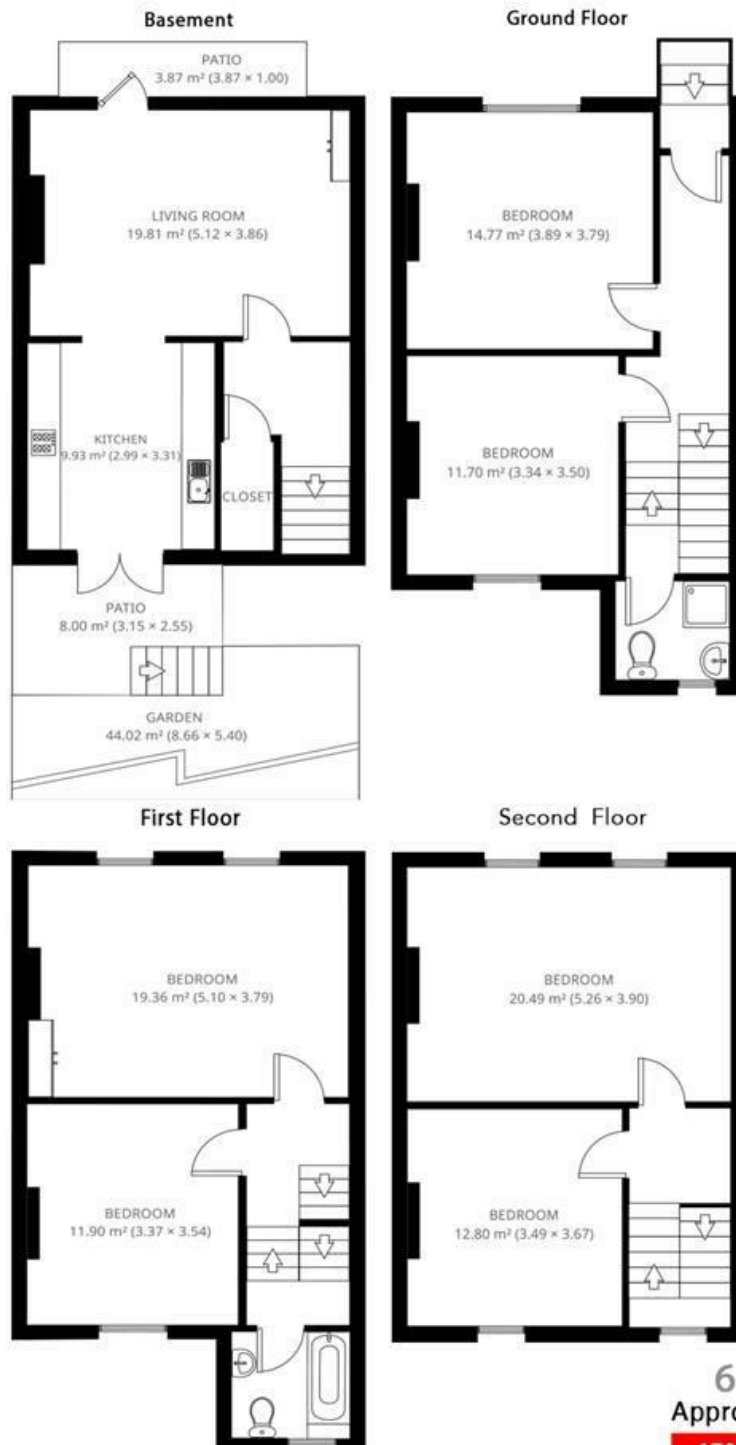
Features

- Six double bedrooms
- Georgian
- Two bathrooms
- Open plan kitchen and reception area
- Close to transport links
- Private garden

Council tax band E EPC rating D (67)



Grosvenor Terrace, Camberwell, SE5



Grosvenor Terrace

6 Bed House
Approx internal area:

1701 sqft 158 sqm

While we do try our very best, floor plans are produced as a guide only and we take no responsibility for the precise accuracy with which any property is represented

Grosvenor Terrace, Camberwell, SE5

